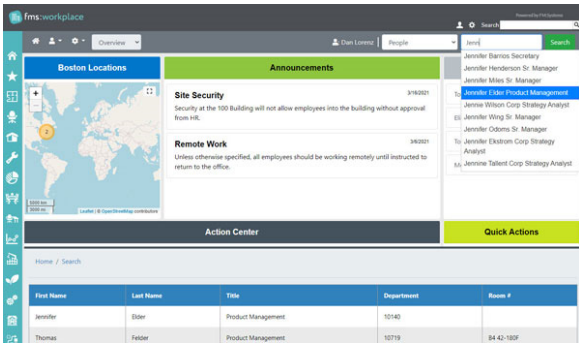


Is your FMS software ready for the hybrid workplace?

Home Pages, Mobile Solutions, Data Integrations, Advanced Configuration: AMS can get you to where you want to be with your FM:Systems software.

Home Page Content Management

The user experience is extremely important to the overall success of any software platform. With FMS:Workplace, the home page section of the software has the most visibility and represents the starting point of the software. After years of customizing powerful and functional home pages for customers, AMS decided to take the best of these designs and bring them together in a configurable way. Meet Dynamix, the AMS home page content manager plug-in for FMS:Workplace. Dynamix allows custom-

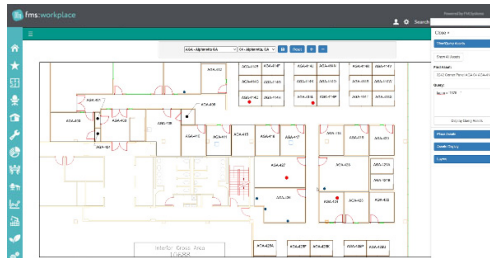


ers to design dashboards themselves using multiple content widgets ranging from maps, charts, and statistics to drill-down dashboard reports and announcements. Dynamix allows you to better organize and manage the home page content associated with each user role in an easy-to-use interface. This administrative interface allows you to configure unique solutions that adhere to corporate marketing standards (fonts, colors, icons, and much more). Dynamix works in a highly configurable manner that allows you to tailor your home pages to work the way you want them to. Ask to see a demo to see more about this exciting solution!

NEW Visual Asset Manager

Trying to represent assets on the floor plan can be a challenge to keep updated since AutoCAD is traditionally needed to represent asset likeness and locations. AMS has created a new Visual Asset Manager plug-in for FMS:Workplace that allows for the placement of assets inside a floor plan room without the need for CAD software. Assets can easily be dragged to a location within a room where the coordinates and room location will automatically be saved to the asset. Asset locations can be represented by a basic dot or pin icon or can be associated with your own SVG graphic file drawn to scale! Some additional things you can do with the plug-in include:

- Lookup and place an asset visually
- Query/Filter assets on the floor plan
- Rotate and mirror asset graphics
- Find assets by their ID or tag number



Use cases range from furniture layouts to mechanical systems and even lab equipment. Talk to us to find out more about how Visual Asset Manager can be used to track assets in your space.

Keep in touch! You can find AMS at these popular sites:



Hybrid Strategy Support

How can FM:Systems software help support your new hybrid workplace strategy? AMS can help you with the setup and reporting of neighborhoods, mobile desk booking, workplace personas, mobile solutions, occupancy sensors, employee experience apps and more to get the most out of your FM:Systems software!

ServiceNow Integration!

Our FM:Systems Integration Engine is a certified ServiceNow Store app that supports automated bi-directional workflows between FM:Systems and ServiceNow. By leveraging the app, you can automate and streamline unstructured manual complex processes between your Facilities and IT departments and convert them into simple digital workflows. Use ServiceNow to field requests and have them processed in FMS:Workplace or create a move ticket in FMS:Workplace and have ServiceNow tickets generate automatically. Ask us about how this can support your workflows.

AMS is a leader in FM:Systems integrations. Using the FMS SOAP API, AMS has created a secure web service to exchange data with other web-based applications. It can even be used to potentially replace your existing SFTP HR & Finance data feeds. Some of our customer use cases include:

- * Automating workflows between FMS:Workplace & FMS:Employee
- * Real-time security badge data integration
- * Data Warehouse Integration

Find out more about what AMS Data Broker can do to help you.

Room Scheduling

AMS is one of the exclusive authorized implementers of FMS:Employee. Our experienced team can help you implement the powerful room and desk booking solution for anything from basic hybrid workspace reservations to full room bookings with catering and room setup options. AMS can help with occupancy sensor, kiosk, and room signage hardware integration as well. We can even help import data such as security badge swipes and other sensors such as those from XY Sense to help you analyze the data using the new FMS:Insights module. Let us help you make your FMS:Employee software a success.

Also Ask Us About:

- Auto-Creation of Maintenance Requests from Move Requests
- Parts Inventory
- Revit Integration + Conversion
- Rent Chargeback Reporting
- Advanced Report Authoring
- Locker Management and Assignments
- Key Management

Making the Most of your Badge Data Integration

AMS has experience with direct integration with popular security badging systems such as S2 Technology and C-Cure. Getting the data, however, is just the beginning.

You really need to know how it can be



reported on, displayed, and further analyzed in FMS:Workplace. Working with our customers, AMS has helped to not only bring the data in, but use different ways to display the data, including:

- Floor Plan Heat Maps
- Drill-Down Department Use Reports by Week and Month
- Dashboard Building Summaries

3D Floor Plan Scanning

You have probably used Google Streets before when visualizing a location you were going to visit. AMS can provide a similar experience but within the facility, allowing

you to navigate the space virtually. By scanning your facility, you



can provide visualization for employees to review space designs and concepts such as Activity-Based Working and Neighborhoods as well as allow them to walk through these spaces as if they were there on-site. They can stop to review tagged areas of the space that provide additional information such as links and videos. You can even measure space as if you were there on-site with a tape measure. Additionally, you can also use scanning to visit each space virtually and capture everything you see for asset management and other data collection. Finally, a scan can also be used to create a basic floor plan if you do not have an existing CAD file. With the latest scanning technology, you could scan up to 10,000 sq/ft in as little as half an hour. Talk to us to get a quote!

Barcoding Solutions

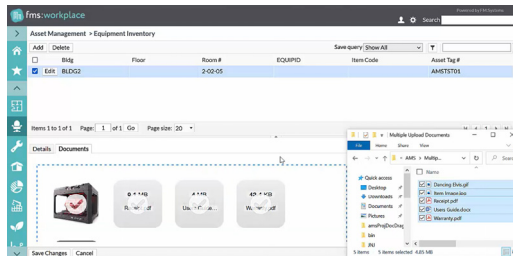
AMS are experts in implementing multiple barcoding systems with FMS:Workplace and FMS:Mobile to allow for the efficient processing and managing of assets. We offer scan-and-go solutions together with Bluetooth hardware scanners as well as mobile device cameras for streamlined asset workflows. Barcoding can make it easy to identify and track assets in the Asset Management module of FMS:Workplace. Using the ID, a user can add or edit assets while in the field using FM:Mobile. By scanning the barcode, action can be taken to perform a number of actions for that asset:



- Lookup Service History
 - View Asset Info (Warranty, Meter Reading, Manuals, Vendors)
 - Add New Assets
 - Edit Asset Properties
 - Create a Work Order for an Asset
 - Lookup Parts
 - Zoom to Asset Location on Floor Plan
- Contact us to learn more about barcoding possibilities for your business needs.

Batch Print and Uploading

Coming soon to the FM:Systems Marketplace, AMS has developed time-saving plug-in tools for FMS:Workplace. Our batch print solution allows you to select multiple records in any data grid view and send them for printing to an SSRS or FMx Report. Examples include batch work order printing and move management lists.



Our drag-and-drop file uploader makes adding files a breeze. You can use this for things such as adding important building equipment asset attachments or attaching multiple documents to a project in the Project Management module. Contact us to learn about how these tools can help you.

Sensor Technology: How can I best leverage this for a hybrid strategy?

AMS has experience with seat sensors, people-sensing cameras, lighting motion sensors, and more. If you are confused about which Internet of Things (IoT) sensor is



PEOPLE DETECTOR PEOPLE COUNTER
best for you, talk to AMS about the pros and cons of each and how they can be leveraged to provide valuable utilization data to make better real-estate and facility design decisions.

AMS Offers Complete FM:Systems Services

Do you need help getting your CAD drawings ready to be imported into FMS:Workplace? Want to know best practices for implementing your Move Management or other modules? AMS is a full-service IWMS implementation firm that can help you with these and much more, including:

- Floor Plan Preparation
- On-Site Field Verification
- Consulting
- Advanced Reporting
- Data Integrations
- Support Contracts

Contact us to learn more about what AMS can do to help.



The AMS Advantage

We are a Premier Certified FM:Systems Business Partner of 20 years offering everything from floor plan CAD services to Consulting, Design, Implementation, and Training. With a team of 30+ implementers, we know FM:Systems software inside and out. Let AMS help you achieve your FM potential!



Contact:
Dan Lorenz
(973) 650-8789
dan.lorenz@
amsworkplace.com

